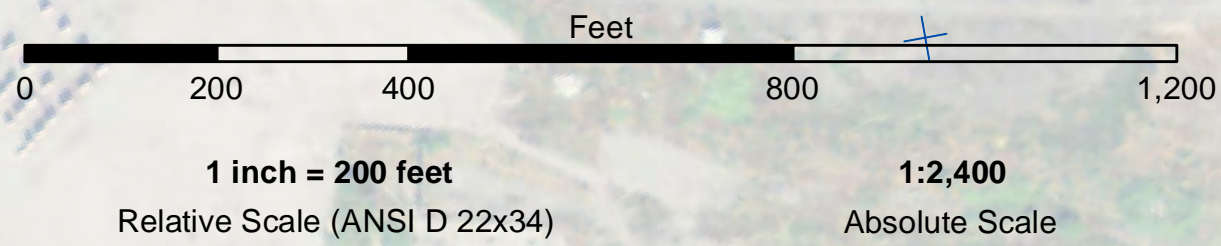


**PRELIMINARY ISSUE**  
THIS PLAN ISSUED FOR  
ADVANCE INFORMATION ONLY



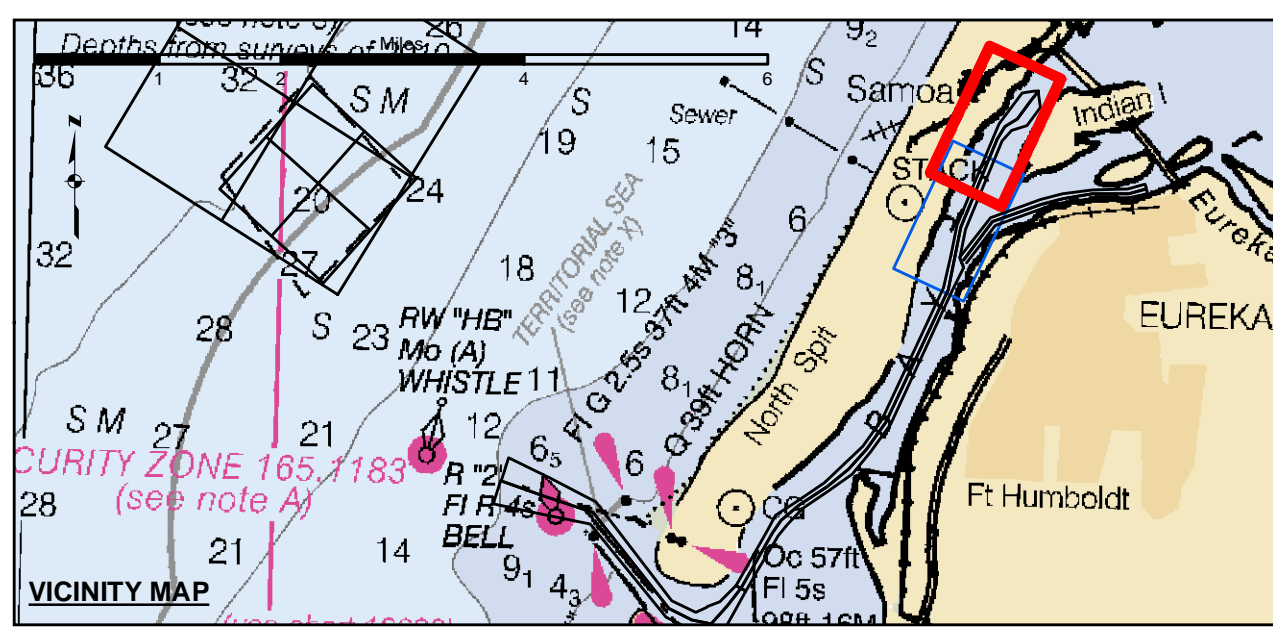
Angle Point	Easting	Northing
18	5956047.79	2183225.93
19	5957636.19	2187056.43
20	5957063.58	2187677.53
21	5958681.79	2188978.43
23	5959681.79	2188378.43
24	5959081.79	2187578.43
25	5958421.69	2187381.23
26	5958007.99	2186903.83
27	5958425.99	2183093.63
C18	5958236.79	2183159.43
C19	5957823.09	2186979.43
C20	5958152.59	2187513.43
C21	5958681.79	2187878.43
C23	5959581.79	2189078.43

**US Army Corps of Engineers**  
San Francisco District  
450 Golden Gate Ave  
San Francisco, CA 94102

**DISCLAIMER**  
The United States Government furnishes Access to this information for the purpose of providing information to the public. The United States Government makes no warranty, expressed or implied, concerning the accuracy, completeness, or reliability of the information. The user is responsible for the results of any application of the data for other than its intended purpose. The user is responsible for the results of any application of the data for other than its intended purpose. The user is responsible for the results of any application of the data for other than its intended purpose. The user is responsible for the results of any application of the data for other than its intended purpose.

Prepared Under the Direction of <b>JOHN D. CUNNINGHAM</b> LT COLONEL, C.E. DISTRICT ENGINEER	Chart Date: Feb 04, 2022
Subject: Hydro Survey Team Leader	Designed by: PDT
Recommended: Chief, Hydro Survey Section	Flotted by: PDT
Approved: Chief, Construction Branch	Checked by: PDT
	Drawn by: PDT

CALIFORNIA  
HUMBOLDT COUNTY  
**HUMBOLDT BAY**  
**SAMOYA CHANNEL**  
CONDITION SURVEY  
22 APRIL 2022



Federal Navigation Channel	Beacon, General	<b>Contours</b>
Shoaling Area	Obstruction Point	-38
Placement Area	Navigation Buoy	-37
Anchorage Area	Navigation Buoy	-36
Wreck Area	Shoalest Sounding*	-35
Submerged Wreck		-34
Angle Point		

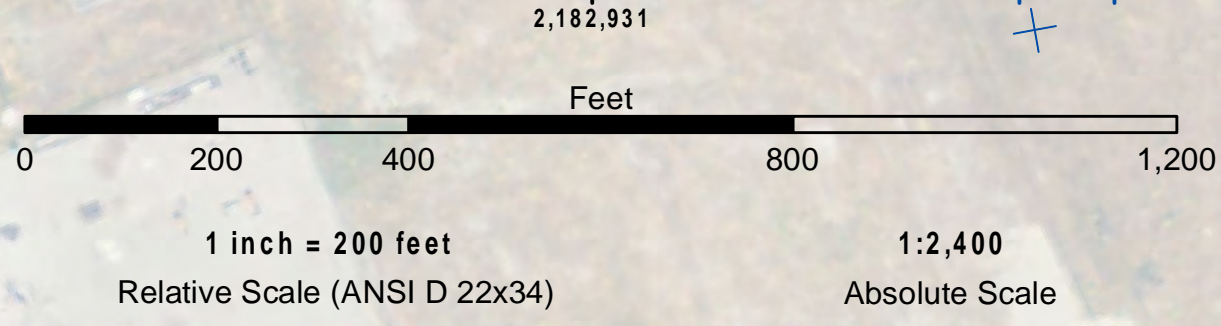
**NOTES:**  
DRAWINGS NOT TO BE USED AS NAVIGATION. ONLY CHANNEL CONDITION AT DATE OF SURVEY. THE LOCATION OF ALL NAVIGATION AIDS ARE BASED ON INFORMATION PROVIDED BY THE U.S. COAST GUARD. BUOY LOCATION REPRESENT THE POSITION OF THE SINKER ONLY.  
SURVEYED BY THE CORPS OF ENGINEERS.  
SOUNDINGS WERE TAKEN BY FATHOMETER AND ARE SHOWN TO THE NEAREST TENTHS OF A FOOT.  
SOUNDINGS ARE BASED ON THE DATUM OF MEAN LOWER LOW WATER AT THE LOCALITY.  
PLANE GRID AND COORDINATES ARE BASED ON THE STATE OF CALIFORNIA COORDINATE SYSTEM, LAMBERT CONFORMAL PROJECTION, ZONE 1 NAD 83, CALIFORNIA, AS DESCRIBED IN SPECIAL PUBLICATION NO. 235, PUBLISHED BY THE NATIONAL OCEAN SURVEY.

PROJECT DEPTHS ARE AS FOLLOWS:  
BAR & ENTRANCE CHANNEL = 48 FEET  
NORTH BAY, SAMOYA TO MILE 5.0 & = 38 FEET  
EUREKA CHANNEL, FIELDS LANDING CHANNEL & MILE 5.0 TO "N" STREET = 26 FEET  
SOUNDINGS ARE BASED ON TIDE GAUGES REFERENCED TO U.S.C. & G.S. BENCH MARKS AS FOLLOWS:  
EUREKA & SAMOYA CHANNELS - B.M. NO. 4 (1906) ELEV. 33.61' M.L.L.W.  
ENTRANCE & NORTH BAY CHANNELS - B.M. NO. 9 (1937) ELEV. 16.35' M.L.L.W.  
FIELDS LANDING CHANNEL - B.M. NO. 5 (1925) ELEV. 8.52' M.L.L.W.

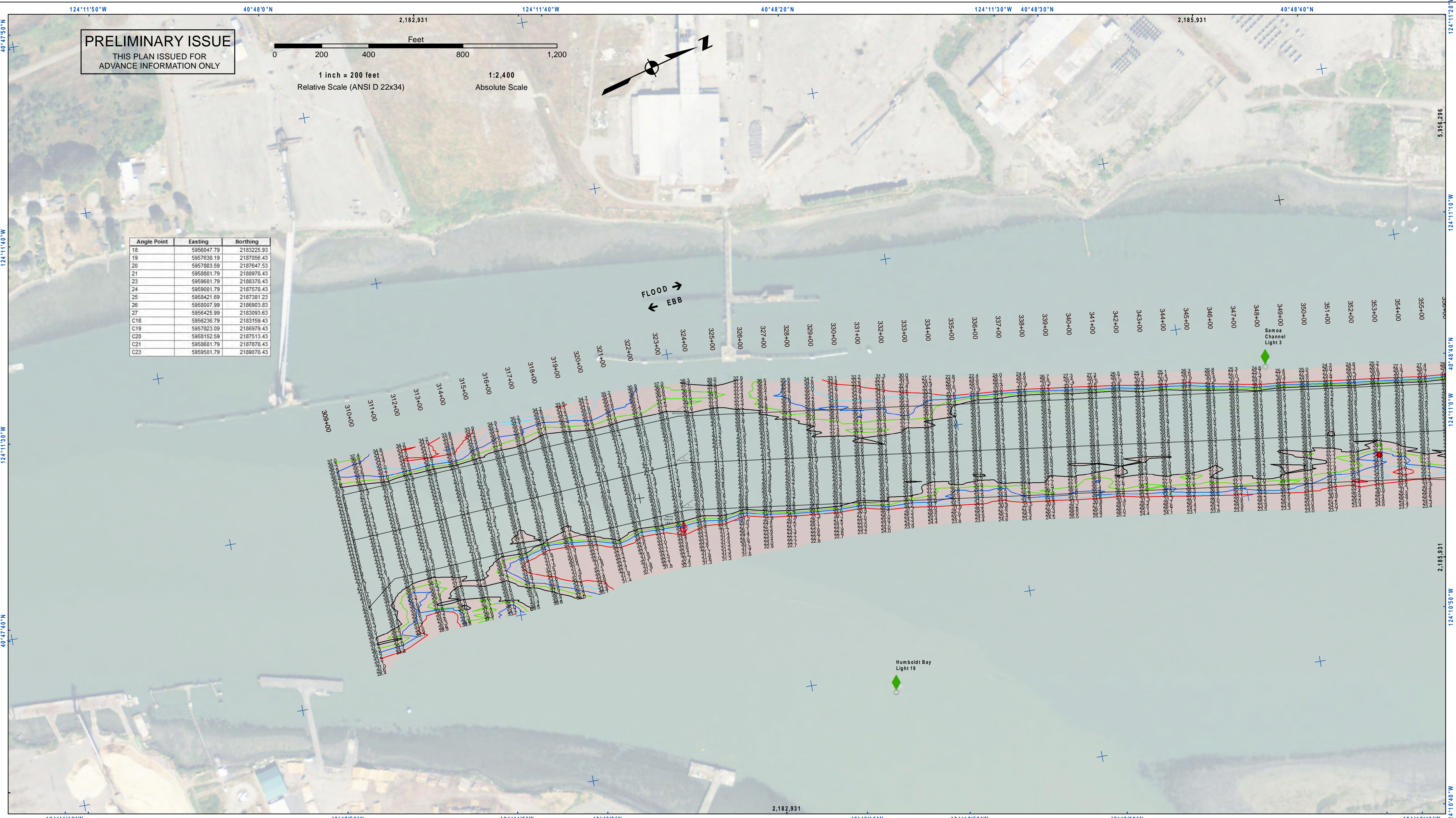
**Sheet Reference Number**  
1 of 2



**PRELIMINARY ISSUE**  
THIS PLAN ISSUED FOR  
ADVANCE INFORMATION ONLY

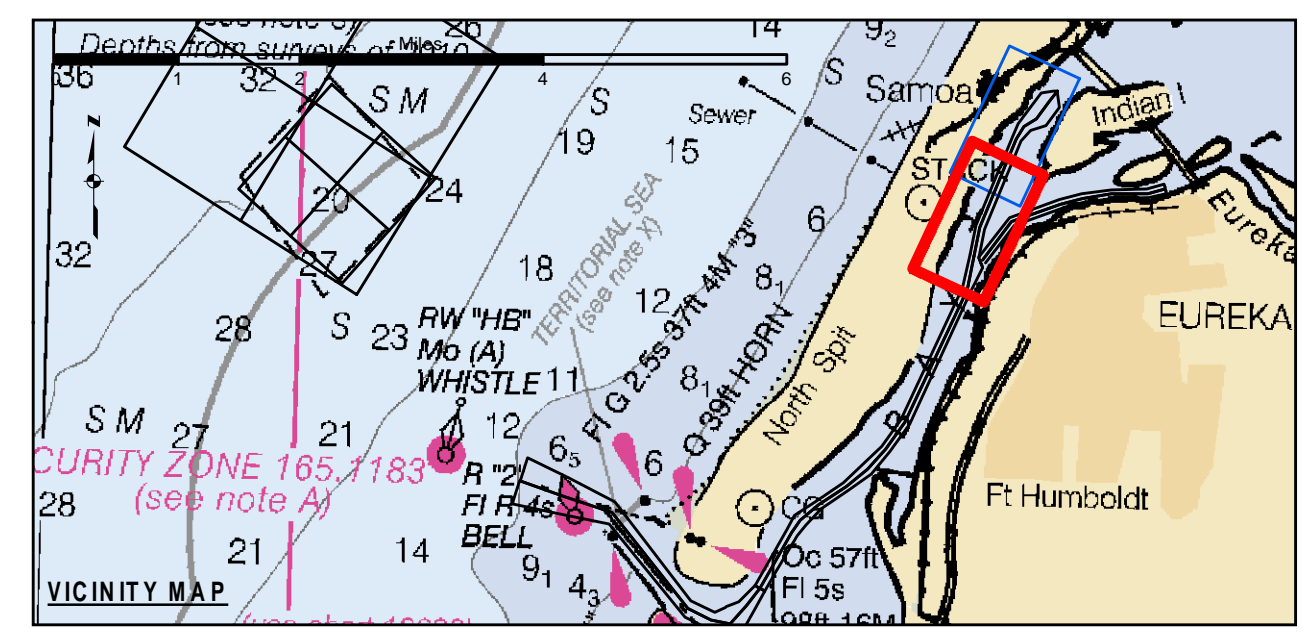


Angle Point	Easting	Northing
18	5956047.79	2183225.93
19	5957636.19	2187056.43
20	5957063.59	2187647.53
21	5958881.79	2188978.43
23	5959681.79	2188378.43
24	5959081.79	2187578.43
25	5958421.69	2187381.23
26	5958007.99	2186903.83
27	5956425.99	2183093.63
C18	5956236.79	2183159.43
C19	5957823.09	2186979.43
C20	5958152.59	2187513.43
C21	5958681.79	2187878.43
C23	5959581.79	2189078.43



**DISCLAIMER**  
The United States Government furnishes access to this information for the purpose of understanding the accuracy, completeness, and reliability of the data for other than the intended purpose. The user is responsible for the results of any application of the data for other than the intended purpose. The user is responsible for the results of any application of the data for other than the intended purpose. The user is responsible for the results of any application of the data for other than the intended purpose.

Chart Date:	Feb 04, 2022
Designed by:	PDT
Drawn by:	PDT
Surveyed By:	PDT
Plotted By:	PDT
Checked By:	PDT
Approved:	Chief, Construction Branch



Federal Navigation Channel	Beacon, General	<b>Contours</b>
Shoaling Area	Obstruction Point	
Placement Area	Navigation Buoy	-38
Anchorage Area	Navigation Buoy	-37
Wreck Area	Shoalest Sounding*	-36
Submerged Wreck		-35
Angle Point		-34

**NOTES:**  
DRAWINGS NOT TO BE USED AS NAVIGATION. ONLY CHANNEL CONDITION AT DATE OF SURVEY. THE LOCATION OF ALL NAVIGATION AIDS ARE BASED ON INFORMATION PROVIDED BY THE U.S. COAST GUARD. BUOY LOCATION REPRESENT THE POSITION OF THE SINKER ONLY.  
SURVEYED BY THE CORPS OF ENGINEERS.  
SOUNDINGS WERE TAKEN BY FATHOMETER AND ARE SHOWN TO THE NEAREST TENTHS OF A FOOT.  
SOUNDINGS ARE BASED ON THE DATUM OF MEAN LOWER LOW WATER AT THE LOCALITY.  
PLANE GRID AND COORDINATES ARE BASED ON THE STATE OF CALIFORNIA COORDINATE SYSTEM, LAMBERT CONFORMAL PROJECTION, ZONE 1 NAD 83, CALIFORNIA, AS DESCRIBED IN SPECIAL PUBLICATION NO. 235, PUBLISHED BY THE NATIONAL OCEAN SURVEY.

PROJECT DEPTHS ARE AS FOLLOWS:  
BAR & ENTRANCE CHANNEL = 48 FEET  
NORTH BAY, SAMOA TO MILE 5.0 & = 38 FEET  
EUREKA CHANNEL, FIELDS LANDING CHANNEL & MILE 5.0 TO "N" STREET = 26 FEET  
1:00 INDICATES THE NUMBER AND BEGINNING OF A LINE OF SOUNDINGS.  
SOUNDINGS ARE BASED ON TIDE GAUGES REFERENCED TO U.S.C. & G.S. BENCH MARKS AS FOLLOWS:  
EUREKA & SAMOA CHANNELS - B.M. NO. 4 (1906) ELEV. 33.61' M.L.L.W.  
ENTRANCE & NORTH BAY CHANNELS - B.M. NO. 9 (1937) ELEV. 16.35' M.L.L.W.  
FIELDS LANDING CHANNEL - B.M. NO. 5 (1925) ELEV. 8.52' M.L.L.W.

CALIFORNIA  
HUMBOLDT COUNTY  
**HUMBOLDT BAY  
SAMOA CHANNEL  
CONDITION SURVEY  
22 APRIL 2022**

**Sheet  
Reference  
Number  
2 of 2**